



**WEATHERBY®**

**SORIX™**

**SEMI-AUTOMATIC  
SHOTGUN**

**OWNER'S MANUAL**

READ THE INSTRUCTIONS AND WARNINGS IN THIS MANUAL CAREFULLY BEFORE USING THIS FIREARM  
THIS INSTRUCTION MANUAL SHOULD ALWAYS ACCOMPANY THIS FIREARM AND BE TRANSFERRED WITH IT  
UPON CHANGE OF OWNERSHIP, OR WHEN THE FIREARM IS LOANED OR PRESENTED TO ANOTHER PERSON



---

# INTRODUCTION

---

Thank you for buying a Weatherby® firearm and welcome to the family. We realize that you had many products to choose from and hope you feel as we do that you purchased the finest quality production firearm on the market today.

When my late grandfather started this company in 1945, it was as a means to turn his revolutionary vision of rifle design and cartridge performance into practical realities.

At the time, I'm sure he had little idea that Weatherby® would come to be one of the most respected and revered brands in the firearms industry. We appreciate this level of respect and you have our assurance it will not be taken for granted.

This Owner's Manual is designed to assist you in learning how to safely use and care for your Weatherby® SORIX™ Semi-automatic shotgun. Please read the entire contents thoroughly and carefully, follow all instructions and safety warnings.

In closing, let me assure you that we are committed to the hunter, shooter and sportsman; and delivering the uncompromising craftsmanship, performance and value that you require in all that we do.

Good Shooting!

A handwritten signature in black ink, appearing to read "Adam Weatherby". The signature is fluid and cursive, with a long horizontal stroke at the end.



## STATE-BY- STATE WARNINGS

Certain states require by law that their own specified warning notices, in larger-than-normal type, be conspicuously included by the manufacturer, distributor or retailer with firearms sold in that state. Weatherby, Inc. sells its products in compliance with applicable laws and regulations. Because our products may be sold in these states, we include the following:

**California:** WARNING Firearms must be handled responsibly and securely stored to prevent access by children and other unauthorized users. California has strict laws pertaining to firearms, and you may be fined or imprisoned if you fail to comply with them. Visit the Web site of the California Attorney General at <https://oag.ca.gov/firearms> for information on firearm laws applicable to you and how you can comply. Prevent child access by always keeping guns locked away and unloaded when not in use. If you keep a loaded firearm where a child obtains and improperly uses it, you may be fined or sent to prison."

"Las armas de fuego deben manipularse de manera responsable y segura para evitar el acceso de niños y otros usuarios no autorizados. California tiene leyes estrictas relacionadas con armas de fuego, y usted puede ser multado o encarcelado si no las cumple. Visite el sitio web del Procurador General de California en <https://oag.ca.gov/firearms> para obtener información sobre las leyes de armas de fuego que le son aplicables y cómo puede cumplirlas. A los niños les atraen las armas de fuego y las pueden hacer funcionar. Ellos pueden causarse lesiones graves y la muerte. Evite que los niños tengan acceso a las armas de fuego guardándolas siempre con llave y descargadas cuando no las esté utilizando. Si usted tiene un arma de fuego cargada en un lugar en que un niño tiene acceso a ella y la usa indebidamente, le pueden dar una multa o enviarlo a la cárcel."

**Connecticut:** "UNLAWFUL STORAGE OF A LOADED FIREARM MAY RESULT IN IMPRISONMENT OR FINE."

**Florida:** "IT IS UNLAWFUL, AND PUNISHABLE BY IMPRISONMENT AND FINE, FOR ANY ADULT TO STORE OR LEAVE A FIREARM IN ANY PLACE WITHIN THE REACH OR EASY ACCESS OF A MINOR UNDER 18 YEARS OF AGE OR TO KNOWINGLY SELL OR OTHERWISE TRANSFER OWNERSHIP OR POSSESSION OF A FIREARM TO A MINOR OR A PERSON OF UNSOUND MIND."

**Maine:** "ENDANGERING THE WELFARE OF A CHILD IS A CRIME. IF YOU LEAVE A FIREARM AND AMMUNITION WITHIN EASY ACCESS OF A CHILD, YOU MAY BE SUBJECT TO FINE, IMPRISONMENT OR BOTH. KEEP FIREARMS AND AMMUNITION SEPARATE. KEEP FIREARMS AND AMMUNITION LOCKED UP. USE TRIGGER LOCKS."

**Maryland:** "WARNING: Children can operate firearms which may cause death or serious injury. It is a crime to store or leave a loaded firearm in any location where an individual knew or should have known that an unsupervised minor would gain access to the firearm. Store your firearm responsibly!"



## STATE-BY- STATE WARNINGS

Massachusetts: "WARNING FROM THE MASSACHUSETTS ATTORNEY GENERAL: This handgun is not equipped with a device that fully blocks use by unauthorized users. More than 200,000 firearms like this one are stolen from their owners every year in the United States. In addition, there are more than a thousand suicides each year by younger children and teenagers who get access to firearms. Hundreds more die from accidental discharge. It is likely that many more children sustain serious wounds or inflict such wounds accidentally on others. In order to limit the chance of such misuse, it is imperative that you keep this weapon locked in a secure place and take other steps necessary to limit the possibility of theft or accident. Failure to take reasonable preventive steps may result in innocent lives being lost, and in some circumstances may result in your liability for these deaths." "IT IS UNLAWFUL TO STORE OR KEEP A FIREARM, RIFLE, SHOTGUN OR MACHINE GUN IN ANY PLACE UNLESS THAT WEAPON IS EQUIPPED WITH A TAMPERRESISTANT SAFETY DEVICE OR IS STORED OR KEPT IN A SECURELY LOCKED CONTAINER."

New Jersey: "IT IS A CRIMINAL OFFENSE TO LEAVE A LOADED FIREARM WITHIN EASY ACCESS OF A MINOR."

New York City: "THE USE OF A LOCKING DEVICE OR SAFETY LOCK IS ONLY ONE ASPECT OF RESPONSIBLE FIREARM STORAGE. FOR INCREASED SAFETY, FIREARMS SHOULD BE STORED UNLOADED AND LOCKED IN A LOCATION THAT IS BOTH SEPARATE FROM THEIR AMMUNITION AND INACCESSIBLE TO CHILDREN AND UNAUTHORIZED PERSONS."

North Carolina: "IT IS UNLAWFUL TO STORE OR LEAVE A FIREARM THAT CAN BE DISCHARGED IN A MANNER THAT A REASONABLE PERSON SHOULD KNOW IS ACCESSIBLE TO A MINOR."

Texas: "IT IS UNLAWFUL TO STORE, TRANSPORT, OR ABANDON AN UNSECURED FIREARM IN A PLACE WHERE CHILDREN ARE LIKELY TO BE AND CAN OBTAIN ACCESS TO THE FIREARM."

Wisconsin: "IF YOU LEAVE A LOADED FIREARM WITHIN THE REACH OR EASY ACCESS OF A CHILD YOU MAY BE FINED OR IMPRISONED OR BOTH IF THE CHILD IMPROPERLY DISCHARGES, POSSESSES, OR EXHIBITS THE FIRE-ARM."

Please check with your licensed retailer or state police for additional warnings which may be required by local law or regulation. Such regulations change constantly, and local authorities are in the best position to advise you on such legal matters.

# - SAFETY -

## FIRST AND FOREMOST

**FIREARMS ARE DANGEROUS WEAPONS, WHICH CAN CAUSE SERIOUS INJURY OR DEATH. WHEN USING ANY FIREARM, SAFETY MUST BE YOUR FIRST AND CONSTANT CONCERN.**

**FAILURE TO FOLLOW ANY OF THE WARNINGS AND INSTRUCTIONS IN THIS OWNER'S MANUAL COULD RESULT IN SERIOUS INJURY OR DEATH.**

### **READ AND UNDERSTAND THE FOLLOWING SAFETY RULES**

**KNOW YOUR FIREARM.** Before assembling or using your Weatherby® SORIX™ Semi-Automatic Shotgun, be sure to read and understand all instructions and safety warnings contained in this Owner's Manual in order to learn how to use the firearm safely and correctly.

**ALWAYS TREAT YOUR FIREARM AS IF IT WERE LOADED.** Use the manual safety lever as outlined in this manual. Never move the safety to the "FIRE" position until YOU are ready to fire.

**ALWAYS KEEP THE MUZZLE POINTED IN A SAFE DIRECTION.** The safe direction may be "up" on some occasions, and "down" on others. Never point the muzzle toward anything not intended as a target.

**USE ONLY THE CORRECT AMMUNITION FOR YOUR FIREARM.** Be sure to use only the correct ammunition for your Weatherby® SORIX™ Semi-automatic shotgun as stamped on the side of the barrel.

**ALWAYS UNLOAD YOUR FIREARM WHEN NOT SHOOTING.** Never transport or store a loaded firearm in a vehicle or building. Unload your firearm before climbing a tree, fence or other obstruction, or when entering a slippery area.

**MAINTAIN YOUR FIREARM.** Keep the barrel clean and free of obstructions. Clean your firearm regularly and have it inspected periodically to make sure it is mechanically correct and functioning properly. Worn or damaged parts can be dangerous.

**DO NOT MAKE UNAUTHORIZED ADJUSTMENTS.** Never make alterations to your firearm. Use only Weatherby® parts. Do not make any changes to the shape or size of the sear or other parts. Repair should be performed by a Weatherby® Authorized Service Center.

**STORE YOUR FIREARM AND AMMUNITION SEPARATELY, WELL BEYOND THE REACH OF CHILDREN.** Always take appropriate measures to ensure your firearm is not accessible to children or others who are untrained or inexperienced in its safe handling.

**MAKE YOURSELF SAFE.** Always wear shooting glasses and use ear protection when shooting or attending shooting events. Never drink alcoholic beverages before or during shooting.

**REMEMBER - FIREARMS SAFETY DEPENDS ON YOU!!**

# INDEX

• Introduction	Page 3
• State-by-State Warnings	Page 4-5
• Safety - First and Foremost	Page 6
• Index	Page 7-8
• Warnings of Great Importance	Page 9
• General Overview	Page 11
• Initial Assembly Instructions	Page 11
• Barrel to Receiver Mounting	Page 12
• Forend Mounting	Page 12
• Manual Trigger Safety	Page 13
• Manual Trigger Safety Swap	Page 14
• Ammunition	Page 15
• Operating Instructions	Page 16
• Opening the Bolt	Page 16
• Checking for and Clearing Bore Obstructions	Page 16
• To Check the Barrel for Obstructions	Page 17
• Clearing a Bore Obstruction	Page 17
• Closing the Bolt	Page 17
• Loading the Shotgun	Page 18
• To Feed a Shell from the Magazine into the Chamber	Page 18
• To Single-load the Chamber without Shells in the Magazine	Page 19
• To Single-load the Chamber with Shells in the Magazine	Page 19
• Firing the Shotgun	Page 20
• Unloading the Shotgun	Page 20
• Multi-Choke Tubes	Page 21
• Removing Choke Tubes	Page 22
• Installing Choke Tubes	Page 23
• Tightening Choke Tubes	Page 23
• Adjustment and Options	Page 24
• Changing the Drop	Page 24
• Installing Drop and Cast Shims	Page 24
• Magazine Limiter Plug Removal	Page 25
• Cleaning and Maintaining Your Weatherby® Semi-Auto Shotgun	Page 26
• Cleaning the Bore	Page 27
• Cleaning the Outside of the Barrel	Page 27
• Cleaning Choke Tubes	Page 27
• Cleaning the Action	Page 28

# INDEX

· Cleaning the Magazine	Page 28
· Cleaning the Forend and Buttstock	Page 28
· Rust Prevention and Removal	Page 28
• Disassembly Instructions	Page 29
· Removing the Forend	Page 29
· Removing the Barrel	Page 29
· Trigger Group Removal	Page 29
· Removing the Bolt Assembly	Page 30
• Assembly of Weatherby® Semi-Auto Shotgun	Page 30
· Trigger Group Installation	Page 30
· Installing the Bolt Assembly	Page 30
· Installing the Barrel and Forend	Page 30
• Suggestions for Getting Top Performance from Your Weatherby® Semi-Auto Shotgun	Page 31
• Storing Your Shotgun	Page 31
• Exploded View Diagram 12 Ga. 3.5" (general assembly)	Page 32
· Parts Listing	Page 33
• Exploded View Diagram 12 Ga. 3.5" (bolt assembly)	Page 34
· Parts Listing	Page 35
• Exploded View Diagram 12 Ga. 3.5" (trigger assembly)	Page 36
· Parts Listing	Page 37
• Weatherby® Service Policy	Page 38
• Ten Commandments of Firearms Safety	Page 39
• Exercise Extreme Caution	Page 40



## WARNINGS OF GREAT IMPORTANCE

•Use of Locking Devices	Page 10
· Alterations	Page 10
• Safety Operations	Page 13
• Proper Ammunition	Page 15
· Lead Exposure	Page 15
• Obstructed Bore	Page 16
• Safety Position	Page 19
• Unintended Discharge	Page 20
• Chamber Inspection	Page 21
•Unload before Choke Tube Manipulation	Page 21
• Proper Cleaning & Lubrication	Page 26
· Excess Lubrication	Page 27
• Bolt Disassembly	Page 30
• Prop 65	Page 41
•Child Access	Page 41

OTHER CAUTIONS AND WARNINGS APPEAR  
THROUGHOUT THE MANUAL.

FIREARMS SAFETY IS YOUR RESPONSIBILITY -- SAFETY MUST BE THE FIRST AND CONSTANT CONSIDERATION OF EVERY PERSON WHO HANDLES FIREARMS AND AMMUNITION.

This Instruction Manual is designed to assist you in learning how to use and care for your Weatherby Shotgun properly. Please contact us if you have any questions. Only when you are certain you fully understand the manual and can properly carry out its instructions should you practice loading, unloading, etc. with live ammunition. If you have any doubts about your ability to handle or use a particular type of gun safely, you should seek supervised instruction. Such personalized instruction often is available from local gun retailers, gun clubs or police departments.

The person possessing a gun has a full-time job. You cannot guess; you cannot forget. You must know how to use your firearm safely. Do not use any firearm without having a complete understanding of its particular characteristics and safe use. Remember: There is no such thing as a fool-proof gun.



**WARNING – USE OF LOCKING DEVICES**

**Always keep your firearm pointed in a safe direction, including when you are installing or removing your locking device. Always verify that your firearm is completely unloaded before installing your locking device. Do not install locking devices in the trigger guard; always keep your fingers and locking device outside the trigger guard during device installation and removal. Store firearms, ammunition and keys separately and securely, away from children and careless adults; do not store your firearm with the keys in the locking device. Do not attempt to work the action of your firearm with the locking device in place; this may damage your firearm. While locking devices are an important aid to security measures, they are not a substitute for safe firearm handling and proper storage. Remember that any mechanical device can be bypassed with enough time, knowledge, determination and equipment.**

LOCKING DEVICE INSTALLATION INSTRUCTIONS

LOCKING DEVICES MUST BE USED SAFELY AND RESPONSIBLY

It is important to use the locking device on your Weatherby firearm when the firearm is stored, or immediate use is not planned.

Keep the muzzle pointed in a safe direction and your fingers outside the trigger guard at all times!

To Install the Factory-Supplied Locking Device:

1. Place the safety in the "SAFE" position.
2. Be sure the firearm and its magazine are completely unloaded and contain no cartridges or cartridge cases!
3. Open the action completely by drawing the bolt fully to the rear. Do not store keys in lock.
4. Apply the lock directly to your Weatherby shotgun.
5. To lock: With the key turned to the farthest clockwise position, insert the loose end of the cable into the padlock. Turn the key counterclockwise and remove the key.
6. Once the lock is securely closed, pull firmly on the lock to test the connection and be sure it is locked. Do not leave or store your firearm with the key in the lock! Store your locked unloaded firearm and the key in secure, separate locations, away from ammunition, children, and unauthorized adults.

# WEATHERBY® SORIX™ SEMI-AUTOMATIC SHOTGUN

Read this manual carefully before assembling or handling your Weatherby®SORIX™ shotgun. It provides important information for assembling, using and caring for your shotgun. Keep this manual and consult it as needed. If you sell or transfer your shotgun, make sure this manual stays with it.

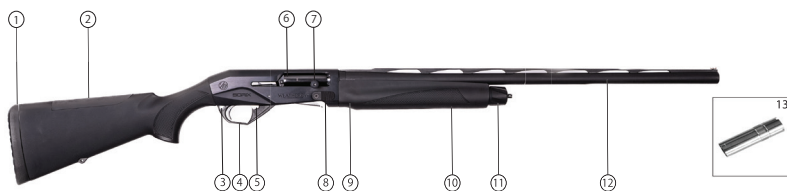
If you have any questions or concerns about the assembly or operation of your shotgun, ask your dealer or a qualified gunsmith.

Before handling any firearm, get instruction from a competent firearms instructor.

## GENERAL OVERVIEW

The following illustration identifies the basic parts of your Weatherby® SORIX™ shotgun.

**THIS MANUAL APPLIES TO ALL SORIX™ MODELS AND ACTION SIZES:**



- |                          |                        |                  |
|--------------------------|------------------------|------------------|
| 1) Recoil Pad            | 6) Bolt                | 11) Magazine Cap |
| 2) Butt Stock            | 7) Bolt Handle         | 12) Barrel       |
| 3) Manual Trigger Safety | 8) Bolt Release Button | 13) Choke Tube   |
| 4) Trigger Group         | 9) Magazine Tube       |                  |
| 5) Shell Release Button  | 10) Forend             |                  |

## INITIAL ASSEMBLY INSTRUCTIONS

Before starting check that the chamber and magazine are unloaded and without obstruction.

## INSTALLING THE BARREL TO THE RECEIVER

1) Inspect barrel to make sure there are no bore obstructions, and that it is free of excess lubricant.

NOTE: NEVER RELEASE THE BOLT WITHOUT THE BARREL FITTED TO THE RECEIVER.

2) Remove the magazine cap (Ref. to Fig. 1) by turning it counter clockwise.



Fig. 1



Fig. 2

3) Slide the forend off the magazine tube.

4) Open the bolt by pressing the Shell Release Button and sliding the bolt back (Refer to Fig. 2)

5) Mount the forearm by sliding the barrel ring forward onto the barrel tube and seating it against the retaining ring. You will hear a click when it is fully seated. (Ref. to Fig. 3)

6) Insert the barrel into the receiver by sliding the barrel into the action until the barrel is fully seated against the receiver.



Fig. 3

7) Screw the magazine cap (Ref. to Fig. 4) onto the threaded front of the magazine tube until it is finger-tight, making sure that the barrel is firmly seated against the receiver.

8) Keeping your fingers away from the trigger and out of the receiver loading port, close the bolt by pressing the bolt release button.



Fig. 4



Fig. 5

NOTE: After each few firings of the shotgun, check to make sure the barrel is still firmly seated against the receiver, and that the magazine cap is still tight.

# MANUAL TRIGGER SAFETY OPERATION

## **⚠ WARNING**

- **NEVER DEPEND ON ANY MECHANICAL SAFETY MECHANISM OR DEVICE TO PREVENT THE DANGERS OF CARELESS HANDLING OR POINTING A FIREARM IN AN UNSAFE DIRECTION. UNSAFE HANDLING CAN RESULT IN SERIOUS INJURY OR DEATH.**
- **WHEN MANIPULATING THE MANUAL SAFETY, KEEP ALL FINGERS OUTSIDE THE TRIGGER GUARD. THE SHOTGUN WILL FIRE IF THE TRIGGER IS PULLED WHEN THE SAFETY IS NOT IN THE "SAFE" POSITION.**
- **THE SAFETY SHOULD ALWAYS BE IN THE "SAFE" POSITION EXCEPT WHEN THE SHOTGUN IS INTENDED TO BE FIRED. NEVER PULL THE TRIGGER WHEN THE SAFETY IS IN THE "SAFE" POSITION.**

### MANUAL TRIGGER SAFETY LOCATION

The manual safety on your Weatherby SORIX shotgun is a button-type manual trigger safety located at the top rear of the trigger guard. When in proper condition and correctly engaged in the "SAFE" position, the manual safety blocks the trigger to avoid accidental discharge under normal conditions and usage.

### MANUAL TRIGGER SAFETY OPERATION

To place the manual trigger safety in the "ON" or "SAFE" position, press the manual trigger safety button from the left side of the trigger guard until it protrudes on the right side of the trigger guard. (Ref. to Fig. 6)

To place the manual trigger safety in the "OFF" or "READY TO FIRE" position, press the manual trigger safety button from the right side of the trigger guard until it protrudes on the left side of the trigger guard (Ref. to Fig. 7) When the manual trigger safety is in the "OFF" or "READY TO FIRE" position, a red band will be visible around the safety button on the left side of the trigger guard. (Ref. to Fig. 7)



Fig. 6



Fig. 7

## MANUAL TRIGGER SAFETY SWAP

Your Weatherby SORIX features the Shift System™ which was designed specifically to give left-handed users an elevated shooting experience. Your SORIX allows the safety button to be swapped from right-handed operation to left-handed operation. Your SORIX will be shipped with right-handed operations installed, follow the following steps to swap your safety configuration.

1. Remove the trigger guard from the shotgun receiver. (Ref. to Dissassembly Instructions, page 27). Locate the pin at the rear of the trigger group above the safety. (Ref. to Fig. 8)
2. While covering the hole on the top of the trigger group with your thumb, use a punch to drive the pin out of the trigger guard. (Ref. to Fig. 8)
3. Carefully remove the spring and detent from the hole on top of the trigger guard and set aside. (Ref. to Fig. 9)
4. Press the safety out of the trigger guard by pushing on the round side of the safety.
5. Reinsert the safety with the triangle side on the left side of the trigger guard. Note that one edge of the triangle safety is longer than the rest. This is the top of the safety.
6. Place the detent followed by the spring back into the trigger guard through the hole on top.
7. Press the spring down with a punch while reinserting the pin through the side of the trigger guard. Note that the spring is under pressure and care should be taken to not let the spring shoot out from the trigger guard before the pin is in place.
8. Conduct a function test to ensure that the safety is operating properly.
9. Reinstall the trigger group into the shotgun. (Ref. to Assembly of Weatherby Semi-Auto Shotgun, page 28).



Fig. 8



Fig. 9

# AMMUNITION

Your Weatherby SORIX is designed to accept specific shell sizes as marked on the barrel. Refer to the barrel of your Weatherby SORIX to determine acceptable shell sizes.

A 3" action is capable of accepting 2-3/4" and 3" shells.

A 3.5" Super Magnum action is capable of accepting up to 3.5" shells.

All Weatherby SORIX shotguns are designed to be used with maximum shot loads not to exceed 2 oz.

## WARNING

•THE ACCIDENTAL OR INTENTIONAL USE OF INCORRECT OR OVERLOADED AMMUNITION CAN RESULT IN DEATH OR SERIOUS INJURY AND DAMAGE TO YOUR FIREARM DUE TO EXCESSIVE PRESSURE. EVEN THE STRONGEST FIREARM CAN BE "BLOWN UP" BY EXCESSIVE PRESSURE. USE ONLY FACTORY-LOADED AMMUNITION OF THE CORRECT GAUGE AND LENGTH FOR YOUR SHOTGUN AS MARKED ON THE SHOTGUN'S BARREL.

•CARRY ONLY THE AMMUNITION OF THE PROPER GAUGE, LENGTH AND TYPE FOR YOUR SHOTGUN WITH YOU WHEN SHOOTING. A 20 GA. SHELL WILL ENTER A 12 GA. CHAMBER FAR ENOUGH TO LEAVE ROOM FOR A 12 GA. SHELL BEHIND IT. SIGNIFICANT DAMAGE TO THE GUN AND POSSIBLE INJURY TO THE SHOOTER WILL RESULT IF THE GUN IS FIRED. ALSO, A 3 1/2" SHELL WILL CHAMBER INTO A 3" CHAMBER, BUT THE CRIMP WILL UNFOLD INTO THE FORCING CONE, CAUSING POSSIBLE UNSAFE PRESSURES.

Exercise care to assure that you are using only the correct ammunition for your shotgun. Always make certain that the gauge indicated on the factory loaded shot shell headstamp matches the gauge marked on the barrel of your shotgun. Never store shells of mixed gauges, lengths or types in a common container or in your pockets. Examine every shell you put into your shotgun. Always wear shooting glasses and hearing protectors when shooting.

## NOTICE

WEATHERBY, INC. SPECIFICALLY DISCLAIMS RESPONSIBILITY FOR ANY INJURY OR DAMAGE WHATSOEVER OCCURRING IN CONNECTION WITH, OR AS A RESULT OF, THE USE OF FAULTY, OR NON-STANDARD, OR "REMANUFACTURED" OR HAND-LOADED OR RELOADED AMMUNITION, OR OF AMMUNITION OTHER THAN FOR WHICH THE FIREARM WAS ORIGINALLY CHAMBERED.

## WARNING

DISCHARGING FIREARMS IN POORLY VENTILATED AREAS, CLEANING FIREARMS, OR HANDLING AMMUNITION MAY RESULT IN EXPOSURE TO LEAD OR OTHER SUBSTANCES KNOWN TO CAUSE BIRTH DEFECTS, REPRODUCTIVE HARM AND OTHER SERIOUS PHYSICAL INJURY. HAVE ADEQUATE VENTILATION AT ALL TIMES. WASH HANDS THOROUGHLY AFTER EXPOSURE.

# OPERATING INSTRUCTIONS

## OPENING THE BOLT

Keeping the muzzle of the shotgun pointed in a safe direction and your fingers out of the trigger guard and away from the trigger.

1. Move the manual safety button to the "SAFE" position. (Ref. to Manual Trigger Safety, page 11)
2. Make sure that the firearm is unloaded.
3. Lock the carrier by pushing the shell release button. (Ref. to Fig. 10)

**Note:** The bolt only locks open when the carrier is locked and no ammunition is in the magazine.

4. While resting the butt pad against your thigh, grasp the shotgun forend firmly with one hand.
5. With the other hand grasp the bolt handle and pull the bolt rearward until the bolt locks into the open position. (Ref. to fig. 11)



Fig. 10



Fig. 11

## CHECKING FOR AND CLEARING BORE OBSTRUCTIONS

The barrel of your shotgun should always be checked for obstructions before assembly, before loading, and **immediately** following any occurrence in the field which might result in mud, dirt, or other debris entering the bore.

### **⚠ WARNING**

**NEVER ATTEMPT TO CHECK FOR OR CLEAR A BORE OBSTRUCTION BY LOADING AND DISCHARGING A SHOT SHELL! IF A BORE OBSTRUCTION IS PRESENT, THIS CAN CAUSE EXCESSIVE PRESSURES WHICH MAY RESULT IN SERIOUS INJURY OR DEATH, AS WELL AS DAMAGE TO YOUR SHOTGUN.**



### CHECKING FOR BORE OBSTRUCTIONS

*Keeping the muzzle of the shotgun pointed in a safe direction and your fingers out of the trigger guard and away from the trigger:*

1. Move the manual safety button to the “SAFE” position. (Ref. to Manual Trigger Safety, Pg. 11)
2. Make sure that the firearm is unloaded. (Ref. to Unloading the Shotgun, page 18)
3. Disassemble barrel from receiver. (refer to Removing the Barrel, page 27)
4. Visually check the bore for obstructions by looking through the barrel from the breech end through the muzzle.

### CLEARING A BORE OBSTRUCTION

Follow all instructions for Checking For Bore Obstructions above.

1. Push a shotgun bore cleaning tool through the bore from the breech end until the end of tool exits the muzzle.
2. If the obstruction cannot be easily cleared, contact the Weatherby® Service Department or your local gunsmith.

### CLOSING THE BOLT

*Keeping the muzzle of the shotgun pointed in a safe direction and your fingers out of the trigger guard and away from the trigger:*

#### **CAUTION**

**To avoid injury, keep hands and fingers away from the loading port when releasing the bolt from the locked open position.  
Do not depress the bolt release button without a barrel installed; this will cause damage to the receiver.**

1. Move the manual safety button to the “SAFE” position. (Ref. to Manual Trigger Safety, page 11)
2. Hold the shotgun with one hand grasping the forend firmly.
3. With the other hand press the bolt release button to permit the bolt to move forward.
4. Visually check the manual safety button to make certain it is in the “SAFE” position. (Ref. to Manual Trigger Safety, Page 11)

#### **CAUTION**

**If a shot shell is in the receiver loading port when the bolt release button is depressed and the manual safety is not in the “SAFE” position, the shotgun is now ready to fire. Do not touch the trigger until you are ready to fire.**

## LOADING THE SHOTGUN

Familiarize yourself with the warnings and information regarding Ammunition beginning on page 13 and examine all shot shells to confirm that they are the proper gauge and length for your shotgun.

*Keeping the muzzle of the shotgun pointed in a safe direction, and your fingers out of the trigger guard and away from the trigger:*

- 1) Visually check the manual safety button to make sure it is in the "SAFE" position. (Refer to Manual Trigger Safety, Page 11)
- 2) Load the first two shot shells by sliding them into the magazine tube, depressing the shell carrier. (Ref. to fig. 12)
- 3) Chamber a shell by pressing the shell release button (Ref. to fig. 13) and pulling the bolt lever fully to the rear and releasing it. (Ref. to fig. 14)



Fig. 12



Fig. 13



Fig. 14

## TO FEED A SHELL FROM THE MAGAZINE INTO THE CHAMBER

*Keeping the muzzle of the shotgun pointed in a safe direction, and your fingers out of the trigger guard and away from the trigger.*

1. Visually check the manual safety button to make sure it is in the "SAFE" position. (Ref. to Manual Trigger Safety, page 11)
2. Press the shell release button to release a shell from the magazine onto the carrier. (Ref. to Fig. 13)
3. Cycle the bolt by pulling it to the rear and releasing it to permit feeding of the shell into the chamber. (Ref. to Fig. 14)
- 4) Load another shell into the magazine tube by depressing the carrier (Ref. to fig. 12) and sliding a shell into the magazine tube.

The gun is now loaded with a shell in the barrel ready to fire and two shells in the magazine.

**Note:** *The magazine tube holds two shells when the magazine plug is installed. The magazine tube holds three 2 3/4" shells or three 3" shells when the plug has been removed.*

 **CAUTION**

- USE ONLY SHOT SHELLS OF THE PROPER GAUGE AND LENGTH AS MARKED ON THE BARREL OF THE SHOTGUN
- NEVER SHOOT SLUGS WITH ANY CHOKE TUBE EXCEPT THE CYLINDER CHOKE TUBE WHICH IS MARKED WITH FIVE CUTS (REFER TO MULTI-CHOKE TUBES, PAGE 15).
- NEVER USE SHELLS WITH A LENGTH LONGER THAN THE CHAMBER (REFER TO BARREL FOR APPROVED SHELL SIZES) AS THIS WOULD HAVE SERIOUS CONSEQUENCES FOR BOTH THE GUN AND THE SHOOTER.
- NEVER SHOOT STEEL SHOT USING FULL OR IMPROVED MODIFIED CHOKES. USE ONLY MODIFIED, IMPROVED CYLINDER OR CYLINDER CHOKE TUBES MARKED WITH THREE, FOUR AND FIVE CUTS RESPECTIVELY (REFER TO MULTI-CHOKE TUBES, PAGE 15).

**NOTE:** Allow the bolt to slam forward. Slowly moving the bolt forward may not allow the bolt head to rotate and lock into battery, causing a misfire.

 **WARNING**

**IF THE MANUAL SAFETY IS NOT IN THE "SAFE" POSITION, THE SHOTGUN IS NOW READY TO FIRE. DO NOT TOUCH THE TRIGGER UNTIL YOU ARE READY TO FIRE.**

TO SINGLE-LOAD THE CHAMBER WITHOUT SHELLS IN THE MAGAZINE.

*Keeping the muzzle of the shotgun pointed in a safe direction, and your fingers out of the trigger guard and away from the trigger at all times:*

1. Move the manual safety button to the "SAFE" position. (Ref. to Manual Trigger Safety, Page 11)
2. Open the bolt of the shotgun. (Ref. to Opening the Bolt, Page 14)
3. Drop a shot shell of the proper gauge and length (Ref. to Ammunition, page 13) directly into the ejection port, with the crimped end of the shot shell forward toward the muzzle.
4. Press the bolt release button (Ref. to Closing the Bolt, Page 15) to allow the bolt to close and feed the shell into the chamber.

TO SINGLE-LOAD THE CHAMBER WITH SHELLS IN THE MAGAZINE.

*Keeping the muzzle of the shotgun pointed in a safe direction, and your fingers out of the trigger guard and away from the trigger at all times:*

1. Move the manual safety button to "SAFE" position. (Ref. to Manual Trigger Safety, page 11)
2. Hold the bolt of the shotgun back with one hand while dropping one shot shell of the proper gauge and length (Ref. to Ammunition, page 13) directly into the receiver ejection port, with the crimped end of the shot shell forward toward the muzzle.
3. Release the bolt handle to allow the bolt to close and feed the shell into the chamber.

**Note:** Allow the bolt to slam forward. Slowly riding the bolt forward may not allow the bolt head to rotate into battery, causing a misfire.

## FIRING THE SHOTGUN

1. With a shot shell in the chamber of the barrel, and **keeping the muzzle of the shotgun pointed in a safe direction and your fingers out of the trigger guard and away from the trigger**, move the manual safety button to the “FIRE” position. (Ref. to Manual Trigger Safety, page 11)
2. Hold the recoil pad snugly to your shoulder and carefully point the muzzle of the shotgun at your intended target.
3. Place your finger lightly on the trigger and squeeze with steadily increasing pressure until the shotgun fires.
4. Unless an immediate second shot is intended, immediately:
  - a. Remove your finger from the trigger.
  - b. Place the manual trigger safety in the “ON” or “SAFE” position. (Ref. to Manual Trigger Safety, Page 11)
  - c. Unload the Shotgun. (Ref. to Unloading the Shotgun, below)



**DO NOT TOUCH THE TRIGGER UNTIL YOU ARE ACTUALLY READY TO FIRE THE SHOTGUN, OR AN UNINTENDED DISCHARGE MAY OCCUR, POSSIBLY RESULTING IN DEATH OR INJURY TO A BYSTANDER, OR DAMAGE TO AN UNINTENDED TARGET.**

**Attention:** The SORIX Semi-Automatic is designed to avoid firing when the bolt is not fully closed. Check that the bolt locking head is fully closed and locked by pushing the bolt handle until it is completely forward.

- After firing the last round the breech bolt automatically stays in the open position. This open breech signals that the magazine is empty. If another shot shell is in the magazine it will automatically be fed into the chamber and will fire upon the next pull of the trigger.

## UNLOADING THE SHOTGUN

**Always unload your shotgun immediately after you finish shooting.**

Fired shells will be ejected from the breech automatically. To unload unfired shells from the shotgun follow these directions:

*With the manual trigger safety in the “SAFE” position (Ref. to Manual Trigger Safety, page 11), and keeping the muzzle of the shotgun pointed in a safe direction and your fingers out of the trigger guard and away from the trigger at all times:*

- 1) Pull the bolt handle to the rear to eject any shell in the chamber. If there is a shell in the chamber and a shell on the shell carrier, forward movement of the bolt will load the shell from the carrier into the chamber. To eject that shell, pull and release the bolt handle again.
- 2) If any shells remains in the magazine tube, press the shell release button to place the shell on to the carrier. Pull the bolt lever back to place that shell into the chamber. Then pull the bolt back again to eject the shell from the chamber. Continue until all shells have been ejected.
- 3) Always check to make sure the shotgun is completely unloaded when you are finished shooting.

**⚠ WARNING**

**VISUALLY AND MANUALLY CHECK TO BE SURE THAT NO AMMUNITION IS PRESENT IN THE CHAMBER OR MAGAZINE. IF A SHOT SHELL IS IN THE RECEIVER LOADING PORT WHEN THE BOLT RELEASE BUTTON IS DEPRESSED AND THE MANUAL SAFETY IS NOT IN THE "SAFE" POSITION, THE SHOTGUN IS NOW READY TO FIRE. DO NOT TOUCH THE TRIGGER UNTIL YOU ARE READY TO FIRE.**

## CRIO PLUS CHOKE TUBES

Each new Weatherby SORIX semi-auto shotgun is equipped with 5 interchangeable choke tubes suitable for use with lead and/or steel shot, and one choke tube wrench. (Ref. to Fig. 17 on next page) If applicable, one of the choke tubes is installed in the muzzle of the barrel, and the remaining choke tubes are packaged in the shipping box.

Weatherby choke tubes are crafted from high grade steel and are certified for steel shot from cylinder bore through modified choke constrictions.

The choke type is on the choke tube by notches or symbols. (Ref. to Fig. 15 and 16)



Fig. 15

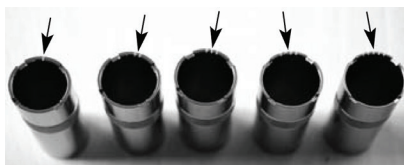


Fig. 16

**⚠ WARNING**

**WHEN REMOVING, INSTALLING OR TIGHTENING CHOKE TUBES, MAKE CERTAIN THERE ARE NO SHOT SHELLS IN THE CHAMBER, RECEIVER OR MAGAZINE. KEEP THE MUZZLE OF THE SHOTGUN POINTED IN A SAFE DIRECTION, AND KEEP YOUR FINGERS OUT OF THE TRIGGER GUARD AND AWAY FROM THE TRIGGER AT ALL TIMES TO AVOID ACCIDENTAL DISCHARGE RESULTING IN POSSIBLE SERIOUS INJURY OR DEATH TO YOURSELF OR OTHERS.**

## REMOVING CHOKE TUBES

After each shooting session, the choke tube should be removed, cleaned, lubricated and reinstalled to prevent corrosion. Powder residues, if not regularly cleaned, will make the removal of the choke tube more difficult.

*Keeping the muzzle of the shotgun pointed in a safe direction, and keeping your fingers out of the trigger guard and away from the trigger at all times:*

1) If removing a choke tube from a barrel installed on a shotgun:

a. Make sure the manual trigger safety is in the "SAFE" position (Ref. to Manual Trigger Safety, Page 11)

b. Unload the shotgun. (Ref. to Unloading the Shotgun, Page 18)

c. Lock the bolt into the open position (Ref. Opening the Bolt, Page 14)



Fig. 17

2) Remove the choke tube by inserting the choke wrench (Ref. to Fig. 17) and turning it counter clockwise. (Ref. to Fig. 18)

3) After cleaning and lubricating, the choke tube may be reinstalled (Ref. to Fig. 19). (refer to Installing Choke Tubes, Page 21)



Fig. 18



Fig. 19

### **⚠ CAUTION**

**IF A CHOKE IS DROPPED CHECK FOR ANY DAMAGE. DO NOT USE A BENT OR DAMAGED CHOKE AS THIS MAY DAMAGE THE BARREL RESULTING IN SERIOUS INJURY OR DEATH.**

### **⚠ CAUTION**

- Never shoot steel shot with a full or improved modified choke. Use only modified, improved cylinder or cylinder chokes (marked three, four, five cuts respectively).
- Never shoot slugs with a full choke, use only the most open choke which is marked with five cuts.
- Never shoot without a choke tube fitted in the barrel

## INSTALLING CHOKE TUBES

Choke tubes may be installed into a barrel disassembled from the shotgun or with the barrel assembled to the shotgun by following these simple instructions.

**NOTE:** If installing choke tubes with the barrel removed from the shotgun, begin from instruction no. 2.

*Keeping the muzzle of the shotgun pointed in a safe direction, and keeping all fingers out of the trigger guard and away from the trigger at all times:*

1. When installing a choke tube in a barrel installed on a shotgun,
  - a. Make sure the manual trigger safety is in the "SAFE" position (Ref. to Manual Trigger Safety, Page 11).
  - b. Unload the shotgun (Ref. to Unloading the Shotgun, Page 18).
  - c. Lock the bolt into the open position (Ref. Opening the Bolt, Page 14.)
2. Insert the smooth (non notched) end of the choke tube into the muzzle of the barrel, and screw it into the barrel as far as possible with your fingers, turning it in a clock-wise direction, being careful not to cross thread the choke.
3. Insert the stepped end of the choke tube wrench into the notches in the muzzle end of the choke tube, and continue turning clock-wise until the choke tube is seated, tightening snugly.

**NOTICE:** *To prevent damage to barrel or choke tube threads, do not over-tighten.*

**NOTE:** If the choke tube is correctly installed, it will not stick out of the muzzle.

## TIGHTENING CHOKE TUBES

Choke tubes may loosen with repeated recoil, which may result in changes in point of impact or damage to choke tube or barrel threads with extended use. Check and tighten choke tubes frequently before after and during shooting.

Choke tubes may be tightened with the barrel installed on the shotgun, or with the barrel removed from the shotgun.

**NOTE:** If tightening a choke tube with the barrel removed from the shotgun, begin with instruction no. 2.

*Keeping the muzzle of the shotgun pointed in a safe direction, and keeping all fingers out of the trigger guard and away from the trigger at all times:*

1. If tightening a choke tube in a barrel installed on a shotgun,
  - a. Make sure the manual trigger safety is in the "SAFE" position. (Ref. to Manual Trigger Safety, Page 11)
  - b. Unload the shotgun. (Ref. to Unloading the Shotgun, Page 18)
  - c. Lock the bolt into the open position (Ref. Opening the Bolt, Page 14.)
2. Insert the stepped end of the choke tube wrench into the notches in muzzle end of choke tube, and tighten the choke tube snugly, turning clock-wise.

## ADJUSTMENT AND OPTIONS

### CHANGING THE STOCK DROP, CAST

Your Weatherby SORIX semi-auto shotgun comes with shims to adjust drop and cast. The drop and cast shims allow the user to adjust the angle of the buttstock left to right (cast) and up and down (drop).

The stock of the Weatherby SORIX has a standard drop of 55 mm (2.1 inches) at the Heel and 40 mm (1.5 inches) at the Comb. Accordingly, a standard drop shim marked 55 is already fitted on the gun between the stock and the receiver.

In order to accommodate all shooters' needs a drop change kit is included as standard equipment. The kit provides two shims marked 50 and 60 (the number on the shim is not indicative of length, but an indicator only and shows how to change the drop "plus" or "minus"). To accommodate left handed shooters, a reversible cast shim has also been included (Refer to Fig. 20).



Fig. 20



Fig. 21

To change the drop refer to Fig. 22 (on the following page) throughout the following instructions:

**Note:** At least one shim must be always be fitted on the gun, otherwise the stock might be damaged during shooting.

Before making any adjustment, make absolutely sure the shotgun is completely unloaded. (Ref. to Unloading the Shotgun, Page 18)

1. Remove rubber pad by hand, then remove the retaining nut (A) using a 13 mm socket, then removing the washers (B & C) and the iron plate (D), and sliding the stock rearward off the recoil spring tube.
2. Insert the shim (E) (Fig. 20) corresponding to the desired drop over the recoil spring tube until the shim is flush with the receiver.
3. Install the stock and insert the iron plate (D) (Fig. 21) and washers (B & C).
4. Tighten the stock retaining nut (A) using the socket or hex wrench.

**After firing a few rounds, check to assure that the stock is tightened snugly to the receiver. If necessary, remove the recoil pad and re-tighten the stock nut (A).**



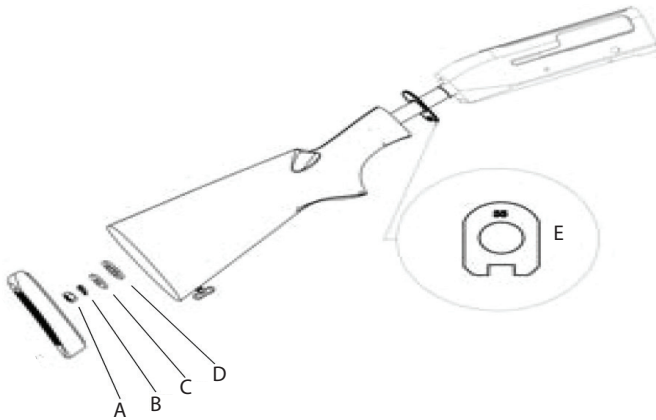


Fig. 22

### MAGAZINE LIMITER PLUG REMOVAL

Since hunting regulations in some areas limit the number of shells allowed in the magazine, your Weatherby SORIX is equipped with a removable limiter plug, which reduces its magazine capacity to two shells. Check your local area hunting regulations to ensure compliance before removing this limiter plug.

Before removing the magazine limiter plug, make sure the Manual Safety Button is in the "SAFE" position (Ref. to Manual Trigger Safety, page 11), and that the shotgun is unloaded. (Ref. to Unloading the Shotgun, page 18)

Keeping the muzzle of the shotgun pointed in a safe direction, and your fingers out of the trigger guard and away from the trigger at all times.

- 1) Unscrew and remove the magazine cap. (Ref. to Barrel to the Receiver Mounting, Page 10)
- 2) Turn the shotgun over and remove the magazine plug from its housing. (Ref. to Fig. 23)
- 3) Replace the forend nut by screwing it into place.



Fig. 23

# CLEANING AND MAINTAINING YOUR WEATHERBY SORIX SEMI-AUTO SHOTGUN

Any firearm requires regular cleaning and periodic maintenance. To assure safe and reliable functioning of your Weatherby SORIX semi-auto shotgun, it is very important that you clean it immediately after each use, and periodically during extended storage periods, to remove powder residue, dirt, dust and excess lubricant, and to prevent rust. During cleaning, inspect components to determine whether they are in proper working order.

A basic cleaning kit consists of proper-sized cleaning rods, bore brushes, bore swabs, patches, gun cleaning solvent, gun lubricant, and lint-free cloths. The cleaning rod must have a tip with a slot into which patches can be inserted. Tooth brushes, cotton swabs and pipe cleaners are very handy tools for cleaning away dirt in hard to reach places.

Proper maintenance is one of the most important facets in assuring the best performance of any firearm and safety of the shooter.

- Before using your Weatherby SORIX shotgun, inspect the barrel to make sure there are no bore obstructions, and that it is free of excess lubricant.
- After each shooting session, disassemble at least the barrel, the choke tube and the bolt mechanism for cleaning and lubricating.
- At frequent regular intervals, fully disassemble your shotgun (refer to Disassembly of Your Weatherby SORIX Semi-Auto Shotgun, Page 27) for thorough cleaning and proper lubrication.
- If the gun is used on a wet day, be sure to dry the gun in a well ventilated area.
- Do not store your shotgun in a gun case, gun slip, or gun sock if not completely dry.
- Storage of the gun in a plastic or synthetic gun case or gun slip for extended periods of time is not recommended.

To properly clean your shotgun, it must first be disassembled (Ref. to Disassembly of your Weatherby Semi-Auto Shotgun, page 27), the parts and components cleaned as discussed below, then reassembled. (Ref. to Assembly Instructions, page 28)

## **WARNING**

**APPLY SOLVENTS AND LUBRICANTS PROPERLY AND SPARINGLY. EXCESSIVE OR BUILT-UP SOLVENTS AND LUBRICANTS MAY CONGEAL OR ATTRACT AND RETAIN DUST AND GRIME, WHICH CAN IMPEDE PROPER FUNCTIONING OF PARTS CRITICAL TO SAFE OPERATION, POTENTIALLY RESULTING IN DAMAGE TO THE SHOTGUN AND SERIOUS INJURY OR DEATH TO THE SHOOTER OR BYSTANDERS.**

**DO NOT SPRAY OR APPLY SOLVENTS OR LUBRICANTS DIRECTLY ON AMMUNITION. SOLVENTS AND LUBRICANTS MAY AFFECT THE PROPELLANT, CAUSING IT NOT TO IGNITE, BUT THE ENERGY FROM THE PRIMER MAY BE SUFFICIENT TO PROPEL THE PROPELLANT, WAD AND SHOT COLUMN INTO THE BORE OF THE BARREL, CAUSING AN OBSTRUCTION, AND RESULTING IN DAMAGE TO THE SHOTGUN AND SERIOUS INJURY OR DEATH TO THE SHOOTER AND BYSTANDERS UPON FIRING A SUBSEQUENT SHOT SHELL.**

### CLEANING THE BORE

1. Disassemble the barrel from the shotgun. (Ref. to Removing Barrel, Page 27)
2. Remove the choke tube by inserting the choke wrench and turning it counter-clockwise. (Ref. to Fig. 17, 18 & 19, page 20)
3. Apply gun cleaning solvent to a bore cleaning brush of the proper size attached to the cleaning rod.
4. Push the brush all the way through the barrel bore several times from the chamber end.
5. Insert the brush into the muzzle of the barrel only far enough to encounter the threads for the choke tube, and twist it several times.
6. With a clean patch inserted in the tip attached to the cleaning rod, push the rod all the way through the barrel bore from the chamber end until the cloth emerges from the muzzle. Remove the dirty patch and withdraw the rod.
7. Repeat step 6 as many times as needed until the patch is clean as it emerges from the muzzle.
8. Using a clean patch or lint-free cloth wrapped around the tip of your finger or similarly shaped object, remove all solvent from the muzzle and from the choke tube threads inside the barrel bore.
9. Insert a patch saturated with gun lubricant into the cleaning rod tip and push it through the bore from the chamber end. Remove the patch and withdraw the rod.
10. Insert a dry, clean patch into the cleaning rod tip and push it through the bore from the chamber end, to remove excess lubricant. Remove the patch and withdraw the rod.
11. Using a clean patch or lint-free cloth wrapped around the tip of your finger or similarly shaped object, apply a light coat of gun lubricant to the choke tube threads and muzzle of the barrel bore.

### **WARNING**

**EXCESS LUBRICATION IN THE BORE OR CHAMBER OF ANY FIREARM MAY CREATE EXCESSIVE CHAMBER PRESSURES OR A PARTIAL BORE OBSTRUCTION, RESULTING IN POSSIBLE DAMAGE TO THE FIREARM AND SERIOUS INJURY TO THE SHOOTER AND BYSTANDERS UPON FIRING. BE SURE ALL EXCESS LUBRICANT HAS BEEN REMOVED.**

### CLEANING THE OUTSIDE OF THE BARREL

1. Using a patch or clean cloth saturated with cleaning solvent, wipe down all accessible surfaces of the barrel, rib and barrel ring. (A clean tooth brush may be handy for cleaning the corners and recesses of the rib and barrel ring.)
2. With a clean, dry, lint-free cloth, remove all cleaning solvent.
3. Using a patch or clean cloth, apply a light coat of gun lubricant to the outside surfaces of the barrel, rib and barrel ring, being careful to remove any excess lubricant.

### CLEANING CHOKE TUBES

1. Apply gun cleaning solvent to a bore cleaning brush of the proper size attached to the cleaning rod.
2. Push the brush all the way through the choke tube several times.
3. With a clean patch inserted in the tip attached to the cleaning rod, push the rod all the

way through the choke tube until the patch emerges from the other end. Remove the dirty patch and withdraw the rod.

4. Repeat step 3 as many times as needed until the patch is clean as it emerges from the choke tube.

5. Insert a patch saturated with gun lubricant into the cleaning rod tip and push it through the choke tube. Remove the patch and withdraw the rod.

6. Insert a dry, clean patch into the cleaning rod tip and push it through the choke tube to remove excess lubricant. Remove the patch and withdraw the rod.

7. Using a patch or clean cloth saturated with gun cleaning solvent, wipe down the outside surfaces of the choke tube. (A clean tooth brush may be handy for cleaning the threads.)

8. With a clean, dry lint-free cloth, remove all cleaning solvent.

9. Using a patch or clean cloth, apply a light coat of gun lubricant to the outside surfaces of the choke tube, being careful to remove any excess lubricant.

#### CLEANING THE ACTION:

1. Using a small lint-free cloth, clean all accessible surfaces on the inside and outside of the action with gun cleaning solvent. A clean tooth brush may be handy for cleaning the corners and recesses of the receiver.

2. Dry all inside and outside surfaces of the receiver thoroughly with a clean, dry cloth.

3. With a clean cloth or patch, apply a light coat of gun lubricant to all accessible surfaces of the action being careful to remove any excess lubricant.

#### CLEANING THE MAGAZINE

1. Using a lint-free cloth, clean all outside surfaces of the magazine tube with gun cleaning solvent, and dry thoroughly with a clean cloth.

2. With a clean, dry, lint-free cloth or patch, apply a light coat of gun lubricant to the outside surface of the magazine tube.

#### CLEANING THE FOREND AND BUTTSTOCK

Usually, wiping the forend and butt stock with a clean, dry cloth or a silicon cloth is all that is necessary. If you have been hunting or shooting in wet weather, allow the butt stock to dry thoroughly before storage.

#### RUST PREVENTION AND REMOVAL

During normal maintenance, after a thorough cleaning, allow 2-3 hours at room temperature, for all metal parts to dry completely. Then apply a liberal amount of high grade Gun Oil to all metal parts, wiping off any excess with a clean dry cloth. If rusting does occur it may only be surface rust due to excessive moisture. You may be able to remove it by using a plastic bristle gun cleaning brush and gun cleaning solvent. If you are unable to remove rust on your shotgun, please contact the Weatherby Service Department or your local gunsmith. Immediate attention to this problem is imperative to prevent irreparable rust damage.

**DO NOT ALLOW RUST TO GO UNTREATED!**

# DISASSEMBLY OF YOUR WEATHERBY SORIX SEMI-AUTO SHOTGUN

## REMOVING THE BARREL AND FOREND

*Keeping muzzle of the shotgun pointed in a safe direction, and keep your fingers out of the trigger guard and away from the trigger at all times:*

*It is recommended that this operation be conducted with the shotgun setting vertically on its recoil pad while holding the action and/or grip.*

- 1) Unload the shotgun. (Ref. to Unloading the Shotgun, page 18).
- 2) Open the bolt by pressing the bolt release, pushing the shell release button, and sliding the bolt back (Ref. to Opening the Bolt, Page 14).
- 3) Unscrew the magazine cap by turning it counter clockwise and remove it (Ref. to Fig. 24).
- 4) GRASPING THE SHOTGUN BY THE ACTION OR GRIP AREA, slide the barrel and forend toward the muzzle and remove them. (Ref. to Fig. 25).
- 5) Pull the forend off the barrel, slide it onto the magazine tube, and screw the magazine cap back onto the magazine if storing with the barrel removed.

## REMOVING THE TRIGGER GROUP

To remove the trigger group from the receiver, follow these instructions:

- 1) Unload the shotgun. (Ref. to Unloading the Shotgun, page 18)
- 2) By means of a punch or a similarly suitable tool, push the trigger guard pin through the receiver and remove the pin.
- 3) While pushing the bolt release, push the trigger group forward and remove the trigger group. Be careful not to force removal of the trigger guard without pushing the bolt release, this may damage the gun.



Fig. 24



Fig. 25

## REMOVING THE BOLT ASSEMBLY

The bolt assembly should be removed for cleaning and lubricating only.

- 1) Remove the barrel (Ref. to Removing the Barrel, page 27)
- 2) Remove the bolt handle by pulling it straight out from the right side of the bolt. (Ref. to Fig. 26)
- 3) Pull the bolt out of the front of the receiver. (Ref. to Fig. 27)



Fig. 26



Fig. 27

### **⚠ WARNING**

**WEATHERBY RECOMMENDS THAT ANY DISASSEMBLY AND REASSEMBLY OF THE BOLT ASSEMBLY BE PERFORMED ONLY BY A QUALIFIED GUNSMITH, TO AVOID REASSEMBLY ERRORS WHICH MIGHT IMPACT THE INTEGRITY OF THE SHOTGUN'S BREECH LOCKING MECHANISM, POTENTIALLY RESULTING IN DAMAGE TO THE SHOTGUN AND SERIOUS INJURY TO THE SHOOTER AND BYSTANDERS UPON FIRING.**

## **ASSEMBLY OF THE WEATHERBY SORIX SEMI-AUTO SHOTGUN**

### TRIGGER GROUP INSTALLATION

- 1) After cleaning and lubricating the trigger group, make sure that the hammer is cocked.
- 2) Reinsert the trigger group into the receiver and push it rearward while pressing the bolt release.
- 3) Align the hole in the trigger group with the hole in the receiver, and then insert the trigger guard pin.

### INSTALLING THE BOLT ASSEMBLY

- 1) Insert the whole bolt mechanism into the receiver. Make sure to correctly insert the bolt link into its housing inside the receiver. (Ref. to Fig. 27)
- 2) Complete the installation by pushing the bolt handle back into the bolt, until it stops and clicks. (Ref. to Fig. 26)

### INSTALLING THE BARREL AND FOREND

- 1) Install the barrel. (Ref. to Installing the Barrel, page 28)
- 2) Install the forend. (Ref. to Installing the Forend, page 28)

---

# SUGGESTIONS FOR GETTING TOP PERFORMANCE FROM YOUR WEATHERBY SORIX SEMI-AUTO SHOTGUN

---

1. Check and tighten choke tubes frequently -- before, during and after shooting. Choke tubes may loosen with repeated recoil, which may result in changes in point of impact or damage to choke tube or barrel threads with extended use.
2. The accuracy of any firearm can vary depending upon the brand and type of ammunition used. If your shotgun does not exhibit the consistent point of impact and shot pattern you expect, you should try several brands and types of ammunition, after referring to point 1, above, before concluding that it is "inaccurate".

**DO NOT ALTER THE STOCK IN ANY WAY. Once a stock has been altered, it cannot be reworked by the Weatherby Service Department.**

3. Consult the Weatherby Service Department before returning any product for inspection or repair.

---

## STORING YOUR SHOTGUN

---

Your Weatherby SORIX semi-auto shotgun may be stored fully assembled (Ref. to Assembly Instructions, page 9), or in "take down" condition.

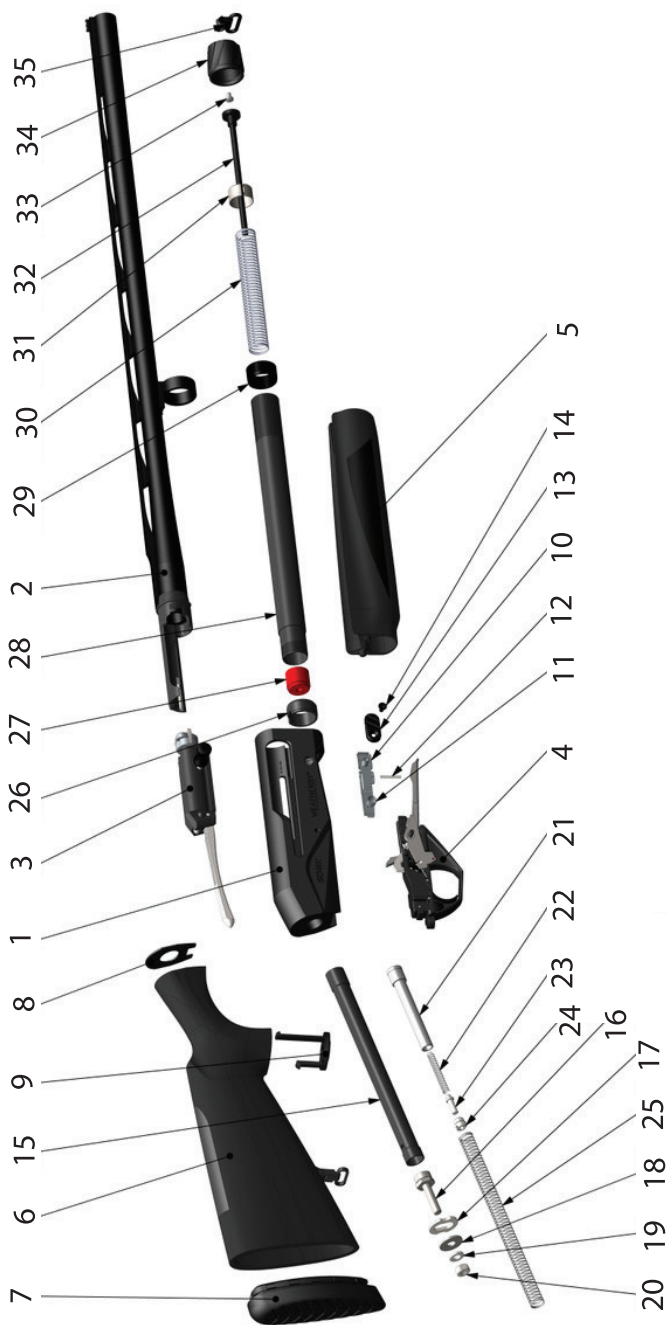
If storing your shotgun fully assembled, release the pressure on the hammer spring as follows:

1. Make certain the shotgun is not loaded by following unloading procedures. (Ref. to Unloading the Shotgun, page 18)
2. Close the bolt. (Ref. to Closing the Bolt, page 15)
3. ***While pointing the muzzle of the shotgun in a safe direction***, pull the trigger.

Do not store your shotgun in a leather case, scabbard or foam lined gun case. Leather and foam can attract moisture and cause rusting. Ensure the surfaces of the gun are cleaned and lightly oiled (Refer to Cleaning your Shotgun, Page 24) before storing to ensure no moisture is present which could result in rust.

For your safety, and the safety of others, store your shotgun with a lock or other safety device properly installed, and store your ammunition in a separate, locked location.

# EXPLODED VIEW DIAGRAM





---

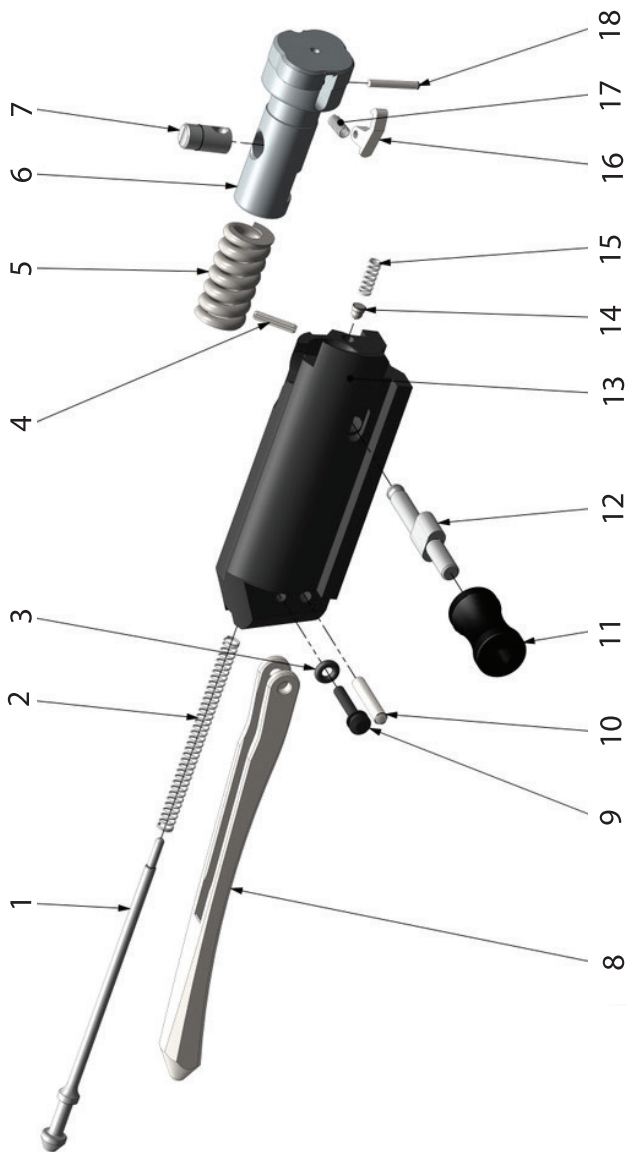
## PARTS LIST

### A00- LETTER PREFIX

---

- |                            |                           |
|----------------------------|---------------------------|
| 1. Receiver                | 19. Lock Washer           |
| 2. Barrel                  | 20. Nut                   |
| 3. Bolt Group              | 21. Plunger               |
| 4. Trigger Group           | 22. Plunger Spring        |
| 5. Forend                  | 23. Plunger Rod           |
| 6. Buttstock               | 24. Plunger Cap           |
| 7. Recoil Pad              | 25. Recoil Spring         |
| 8. Shim                    | 26. Forend Centering Ring |
| 9. Grip Cap                | 27. Follower              |
| 10. Shell Stop Pt. 1       | 28. Magazine Tube         |
| 11. Shell Stop Pt. 2       | 29. Magazine Tube Ring    |
| 12. Roll Pin               | 30. Magazine Spring       |
| 13. Bolt Release           | 31. Magazine Spring Cup   |
| 14. Screw                  | 32. Plug                  |
| 15. Recoil Spring Tube     | 33. Bolt                  |
| 16. Recoil Spring Tube Nut | 34. Magazine Cap          |
| 17. Buttstock Spacer       | 35. Sling Stud            |
| 18. Buttstock Washer       |                           |

# EXPLODED VIEW DIAGRAM



---

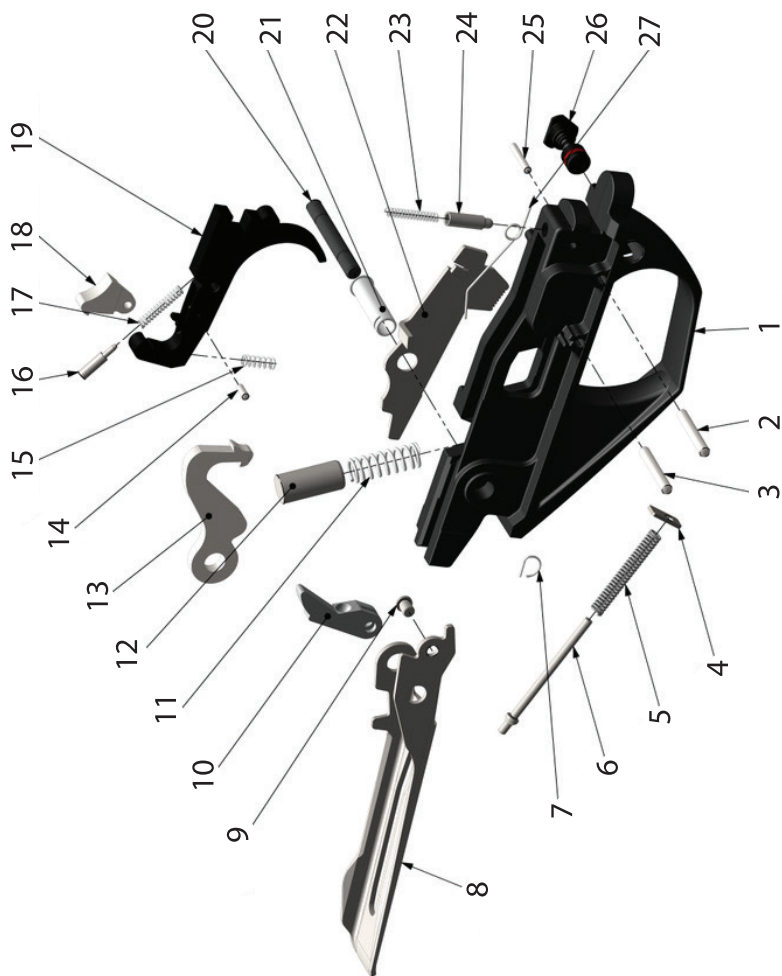
# PARTS LIST

## A01- LETTER PREFIX

---

- |                             |  |
|-----------------------------|--|
| 1. Firing Pin               | 11. Charging Handle Head               |
| 2. Firing Pin Spring        | 12. Charging Handle Body               |
| 3. O-Ring                   | 13. Bolt Body                          |
| 4. Pin - Bolt Handle Detent | 14. Detent - Charging Handle           |
| 5. Spring - Bolt Head       | 15. Spring - Charging Handle<br>Detent |
| 6. Bolt Head                | 16. Extractor                          |
| 7. Pin - Bolt Head Guide    | 17. Extractor Spring                   |
| 8. Bolt Link                | 18. Pin - Extractor                    |
| 9. Firing Pin Retaining Pin |  |
| 10. Pin - Bolt Link         |  |

# EXPLODED VIEW DIAGRAM



---

## PARTS LIST

### A02- LETTER PREFIX

---

- |                             |                                      |
|-----------------------------|--------------------------------------|
| 1. Trigger Guard            | 16. Disconnecter Spring<br>Plunger   |
| 2. Trigger Pin              | 17. Disconnecter Spring              |
| 3. Trigger Pin              | 18. Disconnecter                     |
| 4. Spring Plate             | 19. Trigger                          |
| 5. Spring Carrier           | 20. Trigger Guard Pin                |
| 6. Plunger - Spring Carrier | 21. Pin - Hammer Tube                |
| 7. Circlip - Hammer Pin     | 22. Cartridge Drop Lever             |
| 8. Carrier                  | 23. Spring - Safety Detent           |
| 9. Pin, Lifter Dog          | 24. Safety Detent                    |
| 10. Lifter Dog              | 25. Pin - Safety Detent              |
| 11. Spring- Hammer          | 26. Safety Button                    |
| 12. Hammer Spring Cap       | 27. Spring - Cartridge Drop<br>Lever |
| 13. Hammer                  |                                      |
| 14. Pin                     |                                      |
| 15. Spring - Trigger        |                                      |

---

## WEATHERBY SERVICE POLICY

---

Weatherby is a name that has been synonymous with quality firearms for over 75 years. All Weatherby firearms are manufactured of the finest materials and have been thoroughly inspected and tested in every phase of production. Because of the confidence we have in our products, Weatherby does not provide a written warranty, but rather stands behind its reputation for customer service and satisfaction.

Simply stated, we will consider requests for service or repair of Weatherby firearms without charge on a case by case basis. A determination will be made taking into consideration such things as the age and condition of the firearm, and the circumstances surrounding its malfunction or other problem.

Weatherby, Inc. will not be responsible for defects resulting from ordinary wear and tear, alterations by unauthorized persons, accidents, misuse, use of incorrect or other than factory loaded ammunition, or failure to provide reasonable and normal maintenance.

Should any Weatherby firearm require service or repair under this service policy, it must be delivered transportation prepaid to Weatherby Service Department only after approved by the Weatherby service team and with an approved RMA. The product must be accompanied by a proof of purchase and a letter explaining the problem. It should also be insured by the owner at the time of shipment, as Weatherby, Inc. can accept no responsibility for damage or loss in transit. Weatherby will pay all charges to return the product to the owner if it is accepted for service or repair without charge under the provisions of this service policy. Weatherby, Inc. also reserves the right to repair or replace any product at our sole discretion.

**WEATHERBY, INC. SHALL NOT BE LIABLE FOR ANY CONSEQUENTIAL, INCIDENTAL OR CONTINGENT DAMAGES.**

---

# TEN COMMANDMENTS OF FIREARMS SAFETY

---

Prevention is the solution to hunting and shooting casualties. Every hunting and shooting accident that has occurred could have been prevented. Most such accidents happen as a result of people ignoring basic firearms safety rules. Prevention involves knowing and obeying those basic safety rules. Responsible, knowledgeable, and safe hunters and shooters will learn, remember and follow these simple rules:

1. Treat every firearm with the same respect due a loaded firearm.
2. Control the direction of your firearm's muzzle. Carry your firearm safely, keeping the safety on until ready to shoot. Keep your finger off the trigger until ready to shoot.
3. Identify your target and what is beyond it. Know the identifying features of the game you hunt or the targets you intend to shoot.
4. Be sure the barrel and action are clear of obstructions and that you have only ammunition of proper size for the firearm you are carrying.
5. Whenever not in use, keep your firearm unloaded and store all ammunition in a separate location.
6. Never point a firearm at anything you do not want to shoot. Avoid all horseplay with a firearm.
7. Never climb a fence or tree, or jump a ditch or log, with a loaded firearm. Never pull a firearm toward you by the muzzle.
8. Never shoot at a flat hard surface or water. During target practice, be sure your backstop or shot-fall area is adequate.
9. Store firearms and ammunition separately beyond the reach of children and careless adults.
10. Avoid alcoholic beverages or other mood-altering drugs before or while shooting.

---

# EXERCISE EXTREME CAUTION WHILE HANDLING ANY FIREARM

---

**Heed and follow these additional gun handling warnings whenever using any firearm**

- Be sure the barrel is clear of any obstruction before loading. Make it a habit to check the barrel every time before reloading.
- Never place a loaded gun into a vehicle or lean the gun against any object. The gun should be emptied and placed into a case when not in use.
- Keep the safety on “SAFE” at all times. Move the safety to the “FIRE” position only when you are sure that a shot is imminent.
- While loading or unloading, make sure the gun is pointed in a safe direction. Keep your finger off the trigger while operating the action.
- If your firearm fails to fire when the trigger is pulled, HANDLE WITH CARE!
- If you do not thoroughly understand the proper use and care of your gun, seek the advice of someone you know is competent.
- Do not abuse your hunting privileges. Be respectful of others and other people’s property.



**⚠ WARNING**

**WARNING: CANCER AND REPRODUCTIVE HARM—[www.P65warnings.ca.gov](http://www.P65warnings.ca.gov)**

**DISCHARGING FIREARMS IN POORLY VENTILATED AREAS, CLEANING FIREARMS, OR HANDLING AMMUNITION MAY RESULT IN EXPOSURE TO LEAD AND OTHER SUBSTANCES KNOWN TO CAUSE BIRTH DEFECTS, REPRODUCTIVE HARM, AND OTHER SERIOUS PHYSICAL INJURY. MAINTAIN ADEQUATE VENTILATION AT ALL TIMES. WASH HANDS THOROUGHLY AFTER EXPOSURE. SHOOTING OR CLEANING FIREARMS MAY EXPOSE YOU TO LEAD.**

**⚠ WARNING**

**WARNING Firearms must be handled responsibly and securely stored to prevent access by children and other unauthorized users.**

California has strict laws pertaining to firearms, and you may be fined or imprisoned if you fail to comply with them. Visit the Web site of the California Attorney General at <https://oag.ca.gov/firearms> for information on firearm laws applicable to you and how you can comply. Prevent child access by always keeping guns locked away and unloaded when not in use. If you keep a loaded firearm where a child obtains and improperly uses it, you may be fined or sent to prison." If you or someone you know is contemplating suicide, please call the National Suicide Prevention Lifeline at 1-800-273 TALK (8255).

**ADVERTENCIA** Las armas de fuego deben manipularse de manera responsable y segura para evitar el acceso de niños y otros usuarios no autorizados. California tiene leyes estrictas relacionadas con armas de fuego, y usted puede ser multado o encarcelado si no las cumple. Visite el sitio web del fiscal general de California en <https://oag.ca.gov/firearms> para obtener información sobre las leyes de armas de fuego que son aplicables y cómo puede cumplirlas. Evite el acceso de niños manteniendo siempre las armas bloqueadas y descargadas cuando no estén en uso. Si mantiene un arma de fuego cargada donde un niño la puede obtener y la usa indebidamente, se le puede multar o enviar a prisión. Si usted o alguien que conoce está contemplando el suicidio, llame a la Línea Nacional de Prevención del Suicidio al 1-800-273 TALK (8255).



## WARNING

Firearms must be handled responsibly and securely stored to prevent access by children and other unauthorized users. California has strict laws pertaining to firearms, and you may be fined or imprisoned if you fail to comply with them. Visit the web site of the California Attorney General at <https://oag.ca.gov/firearms> for information on firearm laws applicable to you and how you can comply.

Prevent child access by always keeping guns locked away and unloaded when not in use. If you keep a loaded firearm where a child obtains and improperly uses it, you may be fined or sent to prison.



## ADVERTENCIA

Armas de juego deben de ser usadas responsablemente y almacenadas en un lugar seguro para proibir el acceso a menores de edad y personas no autorizadas. California tiene leyes estrictas sobre la posesión de armas de juego y usted puede ser multado o encarcelado si no las cumple. Visite la pagina de internet de California Attorney General en <https://oag.ca.gov/firearms> para obtener información de las leyes de armas de juego que aplique a su caso y como puede cumplirlas.

Mantenga armas de juego lejos de menores de edad, manteniendo las armas descargadas y encerradas en un lugar seguro cuando no esten en uso. Si mantiene una arma de juego cardaga donde un niño tenga acceso y la utiliza incorrectamente, usted puede ser multado o encarcelado.

**A COPY OF THE INSTRUCTION MANUAL FOR ANY WEATHERBY FIREARM IS AVAILABLE FROM THE FACTORY FREE ON REQUEST, OR IT MAY BE DOWNLOADED FROM OUR WEBSITE AT WWW.WEATHERBY.COM. THESE INSTRUCTION MANUALS CONTAIN IMPORTANT WARNINGS WHICH MUST BE UNDERSTOOD BEFORE USING THESE FIREARMS.**